



# Sai Nirman Biocoal

Supplying complete Industrial  
Energy requirements

SINCE 2013

---

[www.sainirmanbiocoal.com](http://www.sainirmanbiocoal.com)



# Content

- Company Details
- About Us
- Our Mission
- Products
- Manufacturing Units
- Our Valuable Customers
- Contact Details



# Company Details

## Office Address:

"Gurukrupa", Plot No. 23/B,  
Vishwakarma Housing Society, N-8,  
CIDCO, Aurangabad, 431003

## Phone Number:

9371768492

## Email:

[info@sainirmanbiocoal.com](mailto:info@sainirmanbiocoal.com)

## PAN:

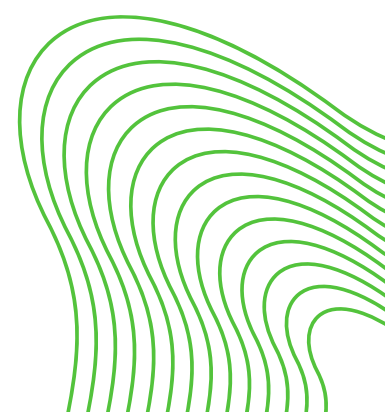
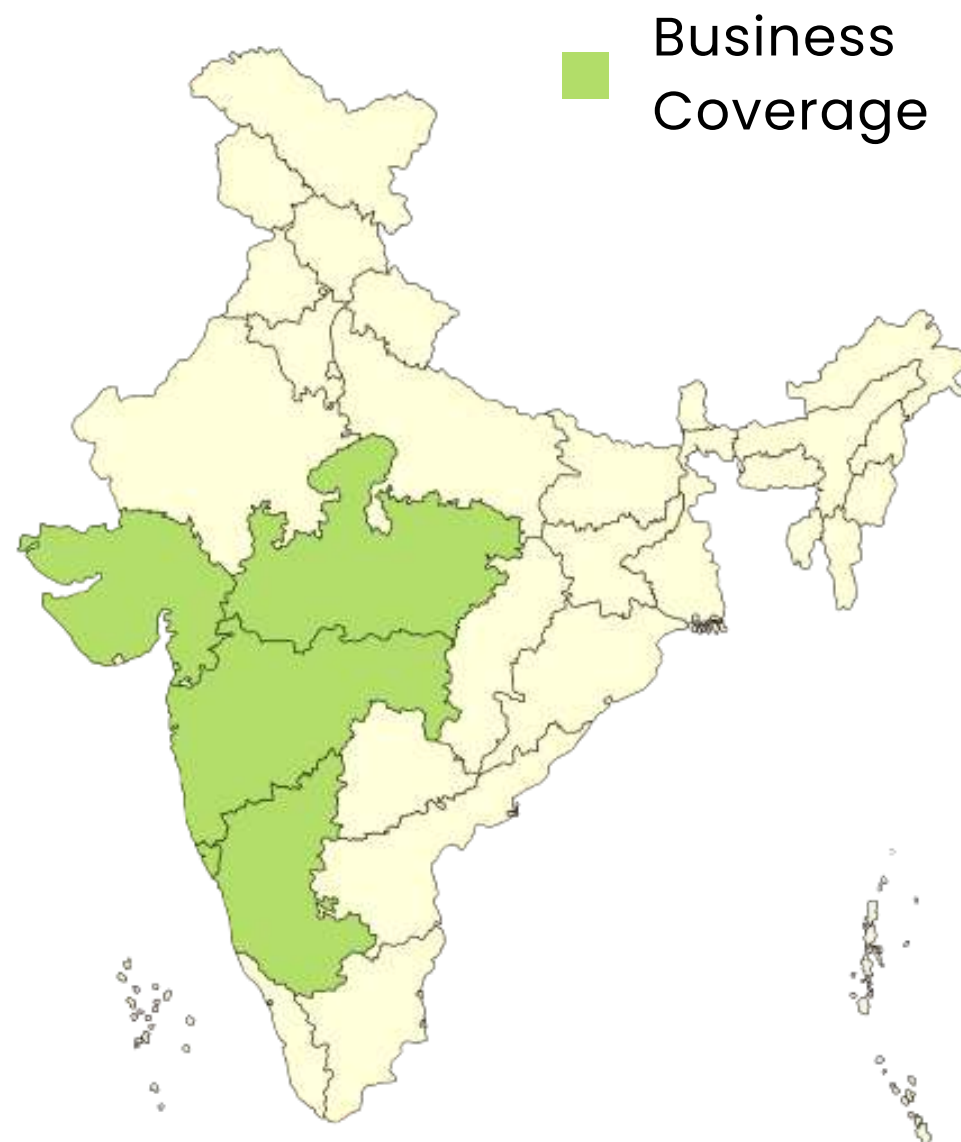
AKEPG0630L

## GSTIN:

27AKEPG0630LIZD

## Website:

[www.sainirmanbiocoal.com](http://www.sainirmanbiocoal.com)





## About Us

Founded in 2013, Sai Nirman Biocoal set out to be a leading supplier of Complete Energy Requirement for industries. We supply complete range of all class multipurpose steam coal, biomass briquettes and more for various applications. We produce over 15,000 MT of Biocoal per month.

Thanks to our valuable customers

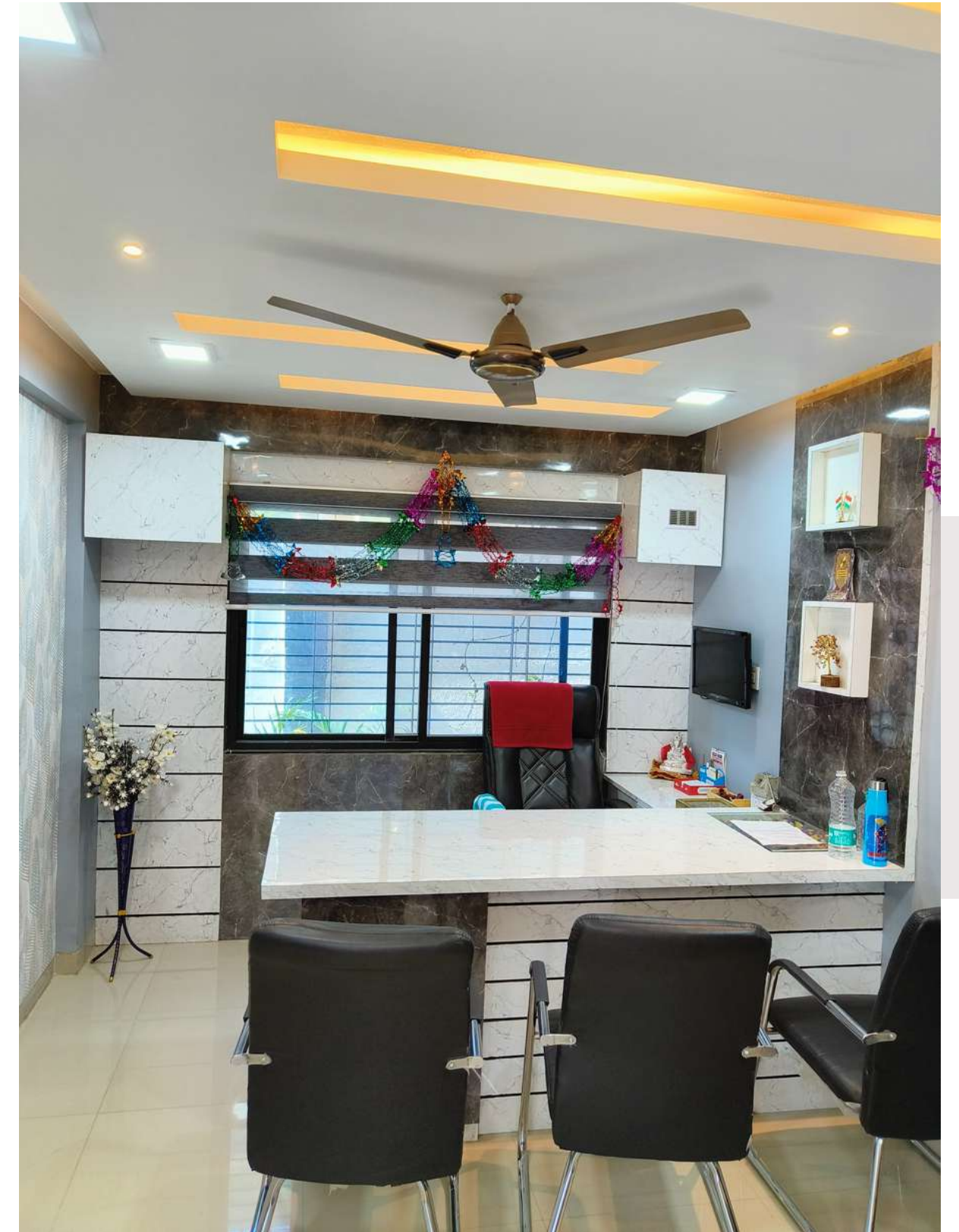
**Our turnover for 2022-23 is 62 Crores !!**





# Our Mission

- To become the first choice for every client.
- To provide high quality material at affordable prices.
- To create and cultivate long term relationships with clients.
- To achieve complete customer satisfaction.
- To maintain a professional relationship with our dedicated clients.





# Products



**01.** Biomass Briquettes

**02.** Biomass Pellets

**03.** Rice Husk

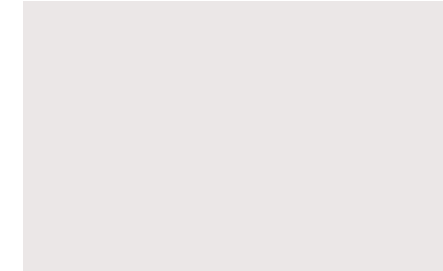
**04.** Wood Chips

**05.** Coal

**06.** Charcoal

**07.** Alum

**08.** Bed Material





# Groundnut Shell Briquettes

Feature	Value
Size	90 mm
Ash Content	$8 \pm 2 \%$
Moisture	$9 \pm 2 \%$
GCV	$3900 \pm 200$ KCal/Kg





# Sawdust Briquettes

Feature	Value
Size	90 mm
Ash Content	8 ± 2 %
Moisture	9 ± 2 %
GCV	3800 ± 200 KCal/Kg





# Soyabean Briquettes

Feature	Value
Size	90 mm
Ash Content	10 ± 2 %
Moisture	9 ± 2 %
GCV	3600 ± 200 KCal/Kg

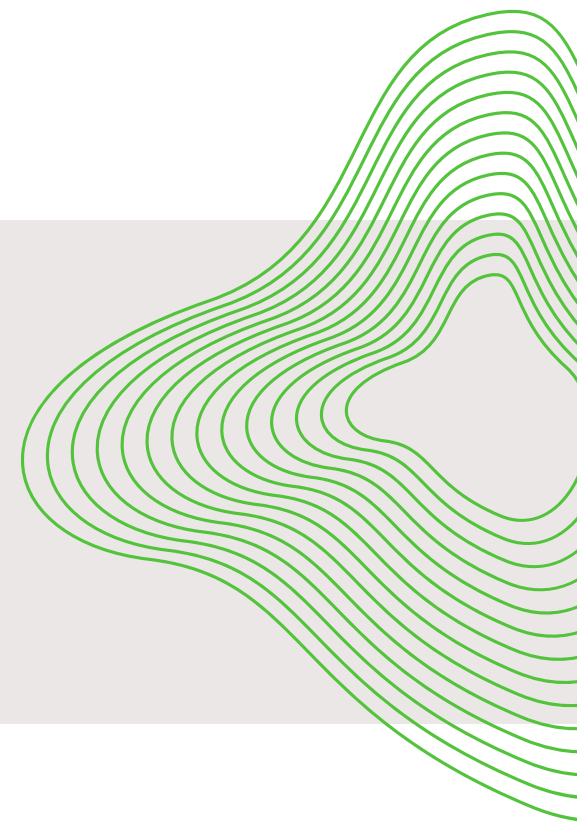




# Baggase Briquettes



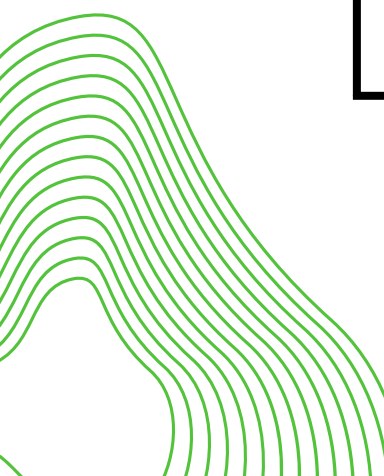
Feature	Value
Size	90 mm
Ash Content	10 ± 2 %
Moisture	9 ± 2 %
GCV	3600 ± 200 KCal/Kg





# Corn Cob Briquettes

Feature	Value
Size	90 mm
Ash Content	10 ± 2 %
Moisture	10 ± 2 %
GCV	3800 ± 200 KCal/Kg

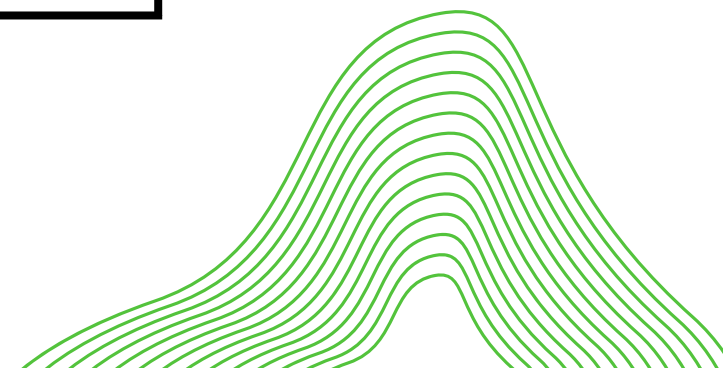




# Biomass Pellet



Feature	Value
Size	8 - 12 mm
Ash Content	$8 \pm 2 \%$
Moisture	$8 \pm 2 \%$
GCV	$4000 \pm 200$ KCal/Kg

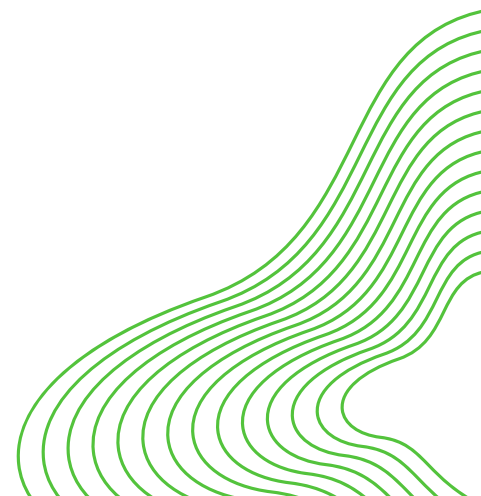




# Rice Husk



Feature	Value
Ash Content	$7 \pm 2 \%$
Moisture	$8 \pm 2 \%$
GCV	$3200 \pm 200 \text{ KCal/Kg}$



# Wood Chips



Feature	Value
Ash Content	$7 \pm 2 \%$
Moisture	$25 \pm 2 \%$
GCV	$3200 \pm 200 \text{ KCal/Kg}$





# Steam Coal



## Indonesian Coal

Feature	Value
Size	0 - 50 mm
Ash Content	$7 \pm 2\%$
Moisture	$(30-40) \pm 2\%$
GCV	3800 - 5000 Gar



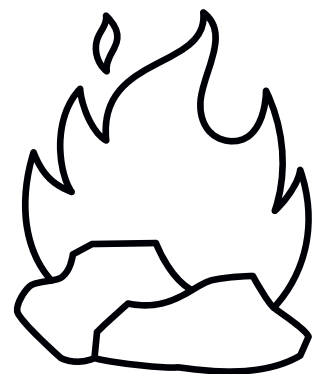
## Indian Coal

Feature	Value
Size	10 - 150 mm
Ash Content	$30 \pm 2\%$
Moisture	$10 \pm 2\%$
GCV	$4000 \pm 200$ KCal/Kg

# Charcoal



Feature	Value
Material	Wood
Form	Powder/Stems
Size	as per requirement





# Alum



Feature	Value
Form	Powder/Lump
Base	Hydrate/Non-hydrate
Ferric/Non-ferric	
Phosphoric/Non-phosphoric	



## Bed Material (Refractory Sand)

Feature	Value
Size	0.5 - 2.5 mm
Temperature	1400° C





# Manufacturing Units

## 1) Telgaon, Maharashtra

Our biggest manufacturing plant is at Telgaon. It has a total of 4 briquette machines and 1 pellet machine. The briquette production at this plant is about 80 TPD and pellet production is 50 TPD. The manufacturing unit shed covers an area of 1,20,000 sq.ft.







# Manufacturing

## Units

### 2) Manvat, Maharashtra

At Manvat we have 2 machines and total plant area of 20,000 sq.ft.





# Manufacturing Units

## 3) Bazar Sawangi, Maharashtra

Our plant located at Bazar Sawangi has 1 machine and the plant covers an area of 10,000 sq.ft.







# Manufacturing Units

## 4) Khamgaon, Maharashtra

This plant has a total of 8,000 sq.ft. shed area and 1 briquette machine. We mainly produce corn briquettes here.







# Manufacturing Units

## 5) Sajapur, Maharashtra

This plant spreads across 2 Acres and has 20,000 sq.ft. of shed area and 2 briquette machines with a production capacity of 40 MT daily.





# Manufacturing Units

## 6) Jintur MIDC, Maharashtra

This plant spreads across 6 Acres and has 30,000 sq.ft. of shed area and 2 briquette machines.







# Manufacturing Units

## 7) Khadka Fata, Maharashtra

This plant spreads across 2 Acres and has 20,000 sq.ft. of shed area and 1 briquette machine.



# Manufacturing Units

## 8) Karodi, Maharashtra

This plant spreads across 6 Acres and has 50,000 sq.ft. of shed area and 4 pellet machine with production capacity of 80 MT per day.





# Manufacturing Units

## 9) Ghanegaon, Maharashtra

This plant spreads across 4 Acres and has 66,000 sq.ft. of shed area and 3 briquette machine with production capacity of 70 MT per day.





**Manufacturing**

**Units**

## **10) Pal Fata, Maharashtra**

This plant spreads across 3.5 Acres and has 15,000 sq.ft. of shed area and 2 briquette machine with production capacity of 40 MT per day.







# Manufacturing Units

## 11) Dindrud, Maharashtra

This plant spreads across 1.5 Acres and has 15,000 sq.ft. of shed area and 1 briquette machine with production capacity of 25 MT per day.







**Manufacturing**

**Units**

## **12) Renapur, Maharashtra**

This plant spreads across 2.5 Acres and has 12,000 sq.ft. of shed area and 1 briquette machine with production capacity of 25 MT per day.





# Our Valuable Customers





# Our Valuable Customers



# Our Valuable Customers





# Our Valuable Customers



# Contact Details



[www.sainirmanbiocoal.com](https://www.sainirmanbiocoal.com)



Sai Nirman Biocoal



[info@sainirmanbiocoal.com](mailto:info@sainirmanbiocoal.com)



sai\_nirman\_biocoal



+91 9371768492



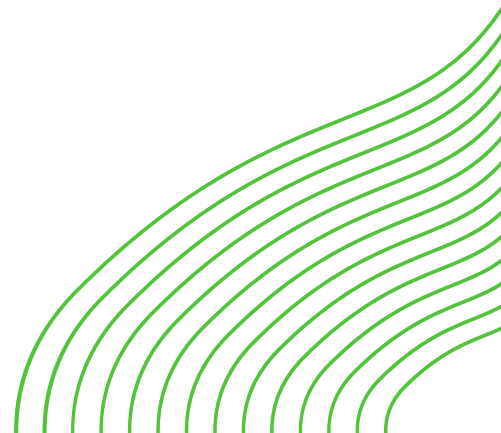
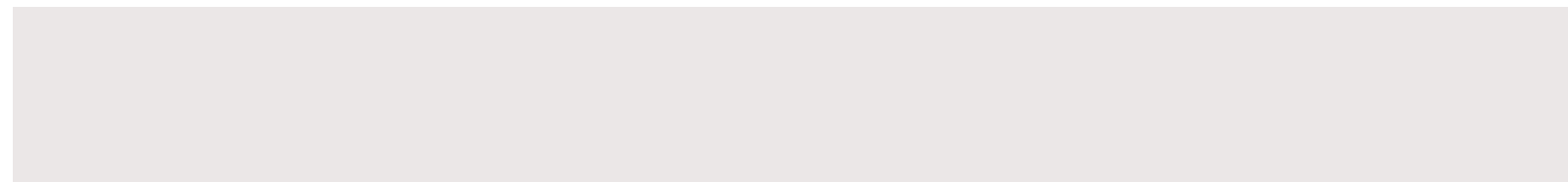
Sai Nirman Biocoal



Sai Nirman Biocoal



sn\_biocoal





**Thank  
You !!**

